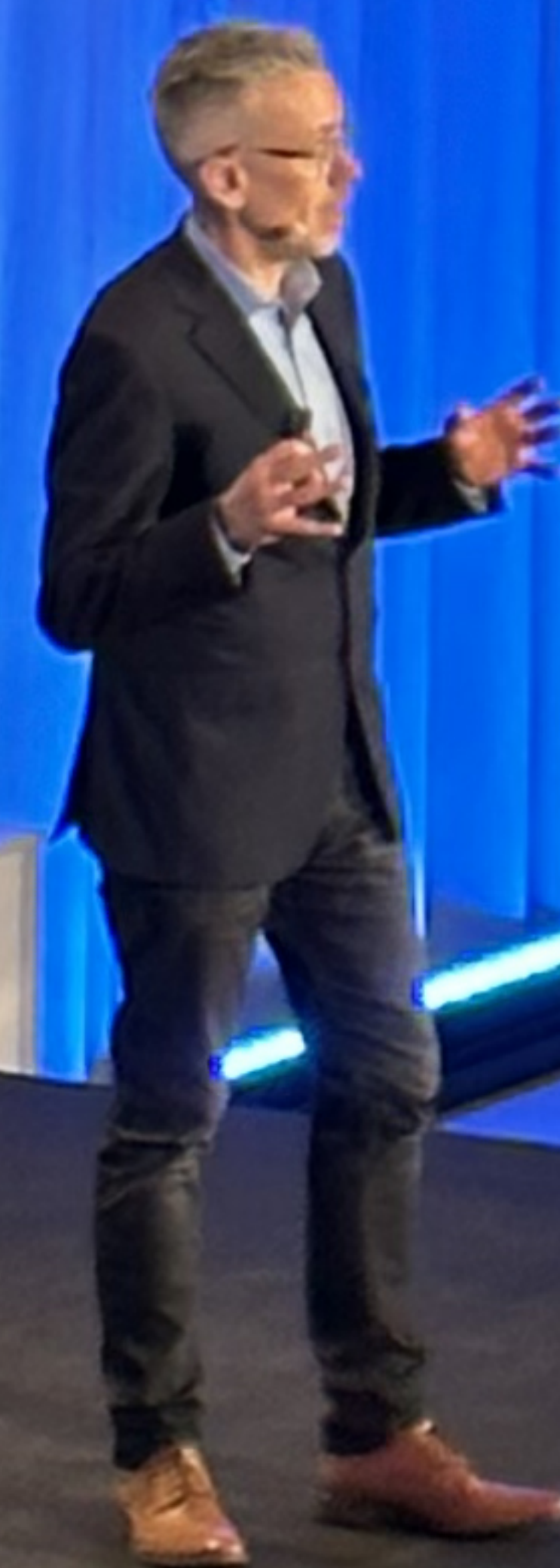


# What is 5G?

Intelligent technology that  
can connect the world  
without boundaries.



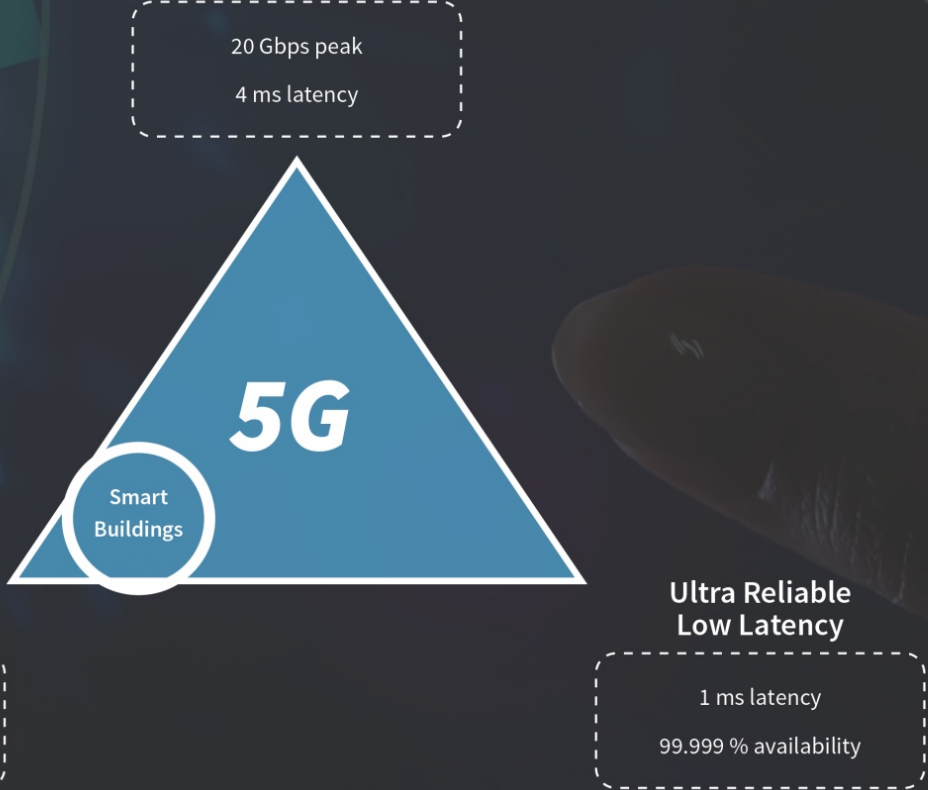




Inbuilding IoT

# What is 5G?

Intelligent technology that  
can connect the world  
without boundaries.



The diagram features a central blue triangle with a white border. Inside the triangle, the text '5G' is prominently displayed in white. A small white circle is positioned at the bottom-left vertex of the triangle, containing the text 'Smart Buildings'. Surrounding the triangle are three dashed white boxes, each representing a 5G use case. The top box is labeled 'Enhanced Mobile Broadband' and lists '20 Gbps peak' and '4 ms latency'. The bottom-left box is labeled 'Massive Machine Type Communication' and lists 'Massive IoT / 5G LPWAN' and '1 million devices/km'. The bottom-right box is labeled 'Ultra Reliable Low Latency' and lists '1 ms latency' and '99.999 % availability'. The background is dark with faint, abstract patterns.

## Enhanced Mobile Broadband

20 Gbps peak  
4 ms latency

**5G**

Smart  
Buildings

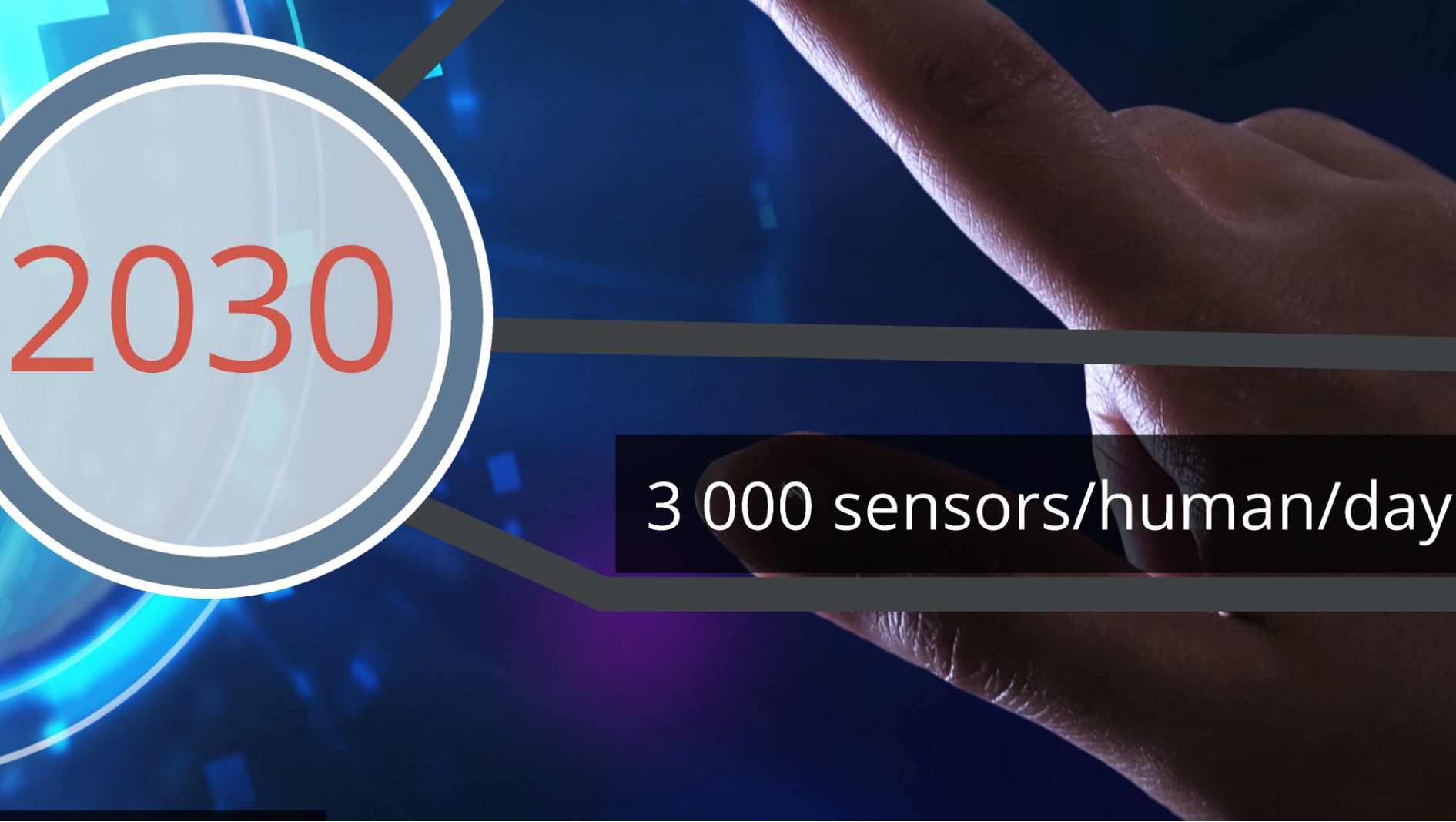
## Massive Machine Type Communication

Massive IoT / 5G LPWAN  
1 million devices/km

## Ultra Reliable Low Latency

1 ms latency  
99.999 % availability





2030

The image features a hand pointing towards the right against a dark blue background with glowing blue lines and squares. A grey circular callout on the left contains the year '2030'. A horizontal grey line extends from the callout to a black rectangular box on the right, which contains the text '3 000 sensors/human/day'.

3 000 sensors/human/day



# Massive IoT like the **greatest recipe**



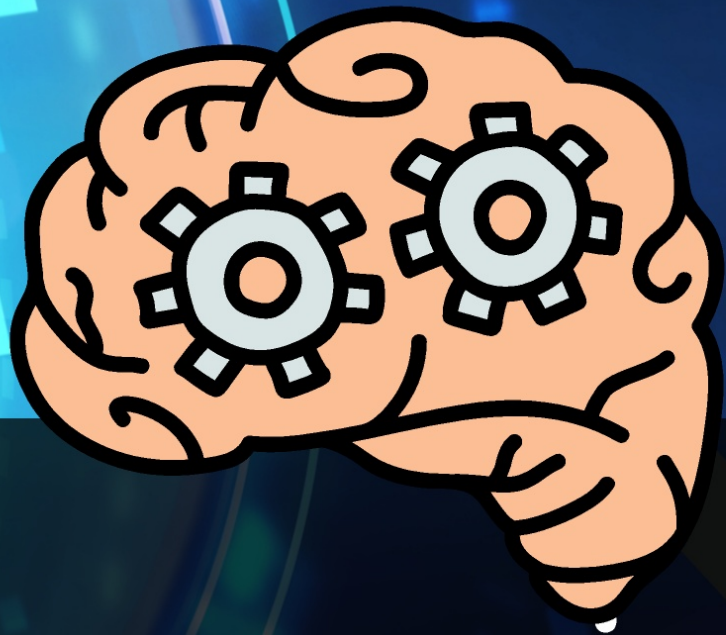
Monitor things

Connect with things

Find things

Let things talk to other things





Open mind











# LPWAN

Low Power Wide Area Network



# LPWAN

## **Viable solutions**

5G

LoRaWAN

BLE

WiFi



# LPWAN

## Key questions?

Total Cost of Ownership

Battery life

Coverage

Availability



# LPWAN CHALLENGES

Indoor coverage

Support when needed

What technology to choose





# 5G CAN

Replace WiFi

Complement LoRaWAN

Work stand-alone



# Who needs i(o)t?



Save the environment

Improve health

Save costs





Occupancy





Waste bins





Air Quality



A hand is shown pointing towards a futuristic, glowing blue digital interface. The interface features circular patterns and floating data points. A dark horizontal bar is overlaid on the image, containing the text "30 trillion devices" in white. A thick grey bar is at the bottom of the image.

30 trillion devices





**LET'S BREAK THE WORLD RECORD.**